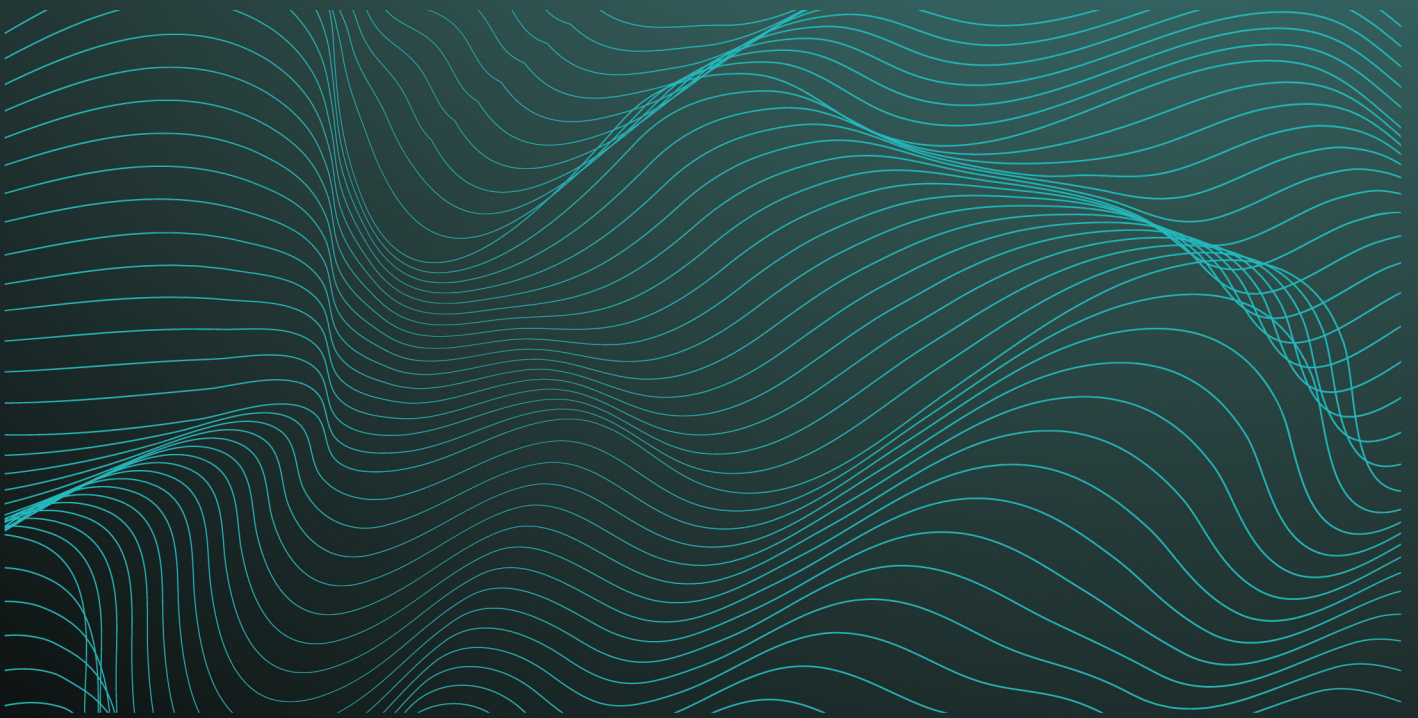


EXPLORE IT ALL





DISCOVER A NEW WORLD WITH THE LATEST INNOVATION FROM WASSP

Outstanding performance, versatility and value. That's what you expect and exactly what you get with the new **S3** sounder from WASSP.

This next generation multibeam sounder has been redesigned from the ground up around a new fully digital DRX transceiver. It delivers on every front – accurate, versatile, user-friendly and most importantly, scalable to your exact needs.

The only thing that hasn't changed with the **S3** is our commitment to bring you a multibeam sounder at a cost-effective price.

wassp[®]
MULTIBEAM

SEE IT ALL

S3

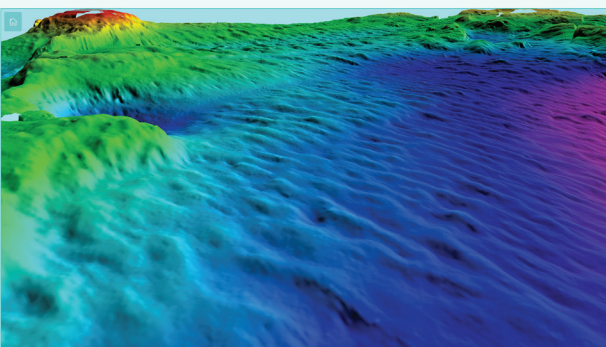
QUICK SCAN

- ▶ **New all-in-one digital DRX transceiver.**
Incredibly versatile and ready for the next technology advances
- ▶ **Wideband fully digital** (136 - 184kHz) transducer technology
- ▶ **Choose your own functions** with new licensing options
- ▶ **Cost-effective solution** for multiple applications
- ▶ **Wireless capability** with optional licence
- ▶ **Easy to install/commission**
- ▶ **Turnkey solution offered** with position/heading and motion sensors
- ▶ **CDX – Control Display Experience,** friendly user interface



Multibeam Transducer

TAKING PERFORMANCE AND PRICE INTO UNCHARTED WATERS



The **S3** is the first release of our new DRX family. It's purpose-built for survey and mapping and has been designed with the entry level market in mind: budget, operational needs, and future technology roll-out.

Scanning a 120 degrees swath port to starboard and using 224 beams, the **S3** delivers each and every time. By using advanced signal processing, you get a complete picture of seafloor bathymetry with ease.

The **S3** is one of the world's most cost-effective professional survey and mapping multibeam sounder solutions.

DRX MULTIBEAM HARDWARE FOR THE FUTURE

This innovative low power, all-in-one “black-box” is not just a robust hardware platform but also introduces **cutting-edge technical innovations and incredible versatility for survey**. This opens countless new possibilities for your operations.

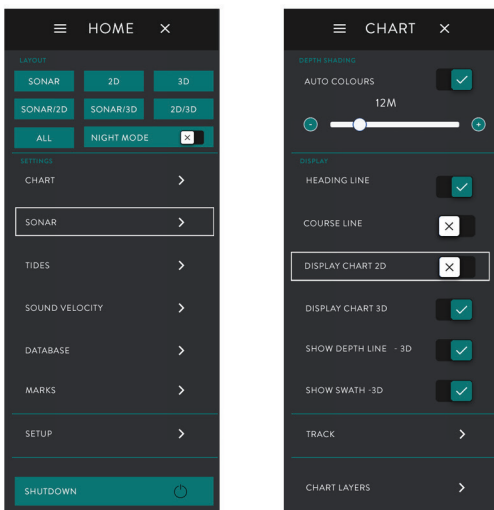


- ▶ Dimensions (L x W x H): 377 x 260 x 132mm
- ▶ Power supply: 9-32VDC

DRX

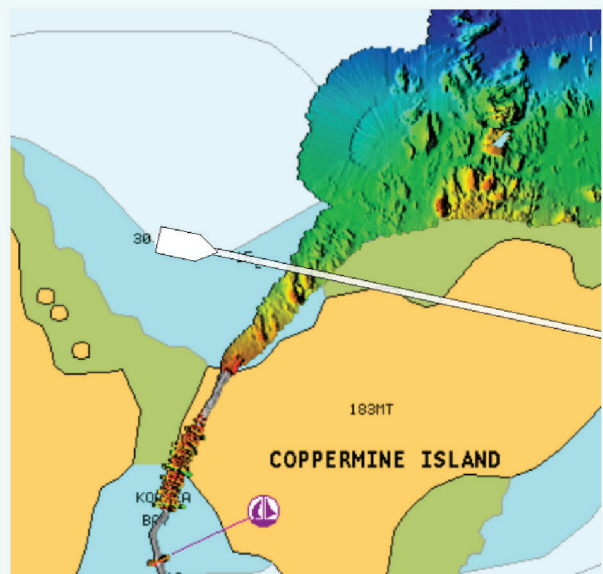
NEW EASY-TO-USE INTERFACE

The **S3** introduces a new simplified WASSP CDX for control, visualisation and data management while still providing a comprehensive set of functions to meet the most demanding survey or mapping work. This makes the **S3** an ideal choice for jobs where you need an all-in-one system for survey and mapping.



CAPTURE MORE WITH IMPROVED PERFORMANCE

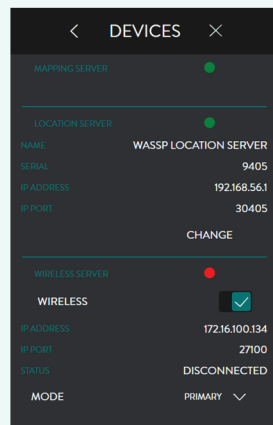
The **S3** is now more sensitive with a higher dynamic range and lower noise level. Through pulse compression and advanced signal processing, the **S3** can deliver accurate, high quality data in even the most demanding marine environments.



CHOOSE YOUR OWN FUNCTIONS

The **S3** introduces an online licensing system which you can tailor to your specific requirements. You can choose which functions you want today and add new ones as you need them. For example:

- ▶ **WASSP Wireless**
(available now)
- ▶ **3rd Party Interface**
(available now)
- ▶ **Sounder Mode**
(future licence)
- ▶ **Side Scan** (future licence)
- ▶ **Backscatter** (future licence)



MORE FLEXIBILITY AND GREATER COMPATIBILITY

In creating the **S3**, we listened to you and redesigned everything around your survey and mapping needs.

You can choose to use the new enhanced WASSP CDX for all your requirements or export data to your current hydrographic and survey software package such as HYPACK, EIVA Navisuite and QINSy (coming later).

NEW OPPORTUNITIES FOR SURVEY AND MAPPING

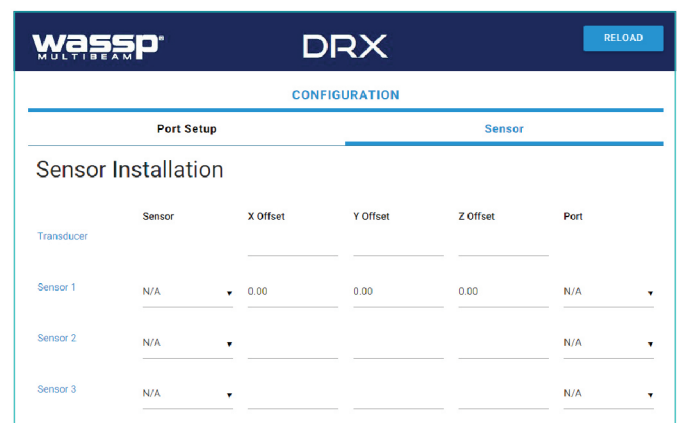
For over a decade, WASSP has delivered professional-level multibeam sounders at a price that bridges the gap between single-beam and more expensive MBES systems.

The **S3** continues that tradition. Its performance and versatility opens new opportunities for anyone who thought that a professional MBES must be beyond their budget.

Port surveying, dredging, coastal, estuary mapping, wreck hunting, potting and lining all fall easily within the **S3's** capabilities.

FAST AND SIMPLE CONFIGURATION

The **S3** uses a new simple web browser interface to configure the system. You don't need to use software to install it, making installation faster and easier than ever before.



WASSP: ALWAYS GOING BEYOND

WASSP is part of the ENL Group, world leaders in marine sounder, radar and communications for more than 70 years. Based in the marine nation of New Zealand, which is in one of the world's largest marine economic zones, ENL continues to achieve and push boundaries in what is a challenging and dynamic industry.

We make software and hardware solutions for organisations working in surveying and mapping, defence, commercial fishing and workboats.

Our passion and commitment to real innovation is what sets us apart. We consistently bring to market game-changing technology and cost effective products with simple operation.

Worldwide support

WASSP is sold and supported by a global network of authorised distributors.

We offer comprehensive technical and user training and can direct technical support worldwide if required.

We pride ourselves on world class product support.

For more info or to find a dealer near you:

Visit WASSP.COM

P: (+64) 9 373 5595

E: sales@wassp.com

FB: facebook.com/wasspmultibeam